

How to use the GUI of registration tool

Kitti Koonsanit

17 January 2013

How to use the GUI of registration tool

1 Installing VMware Player

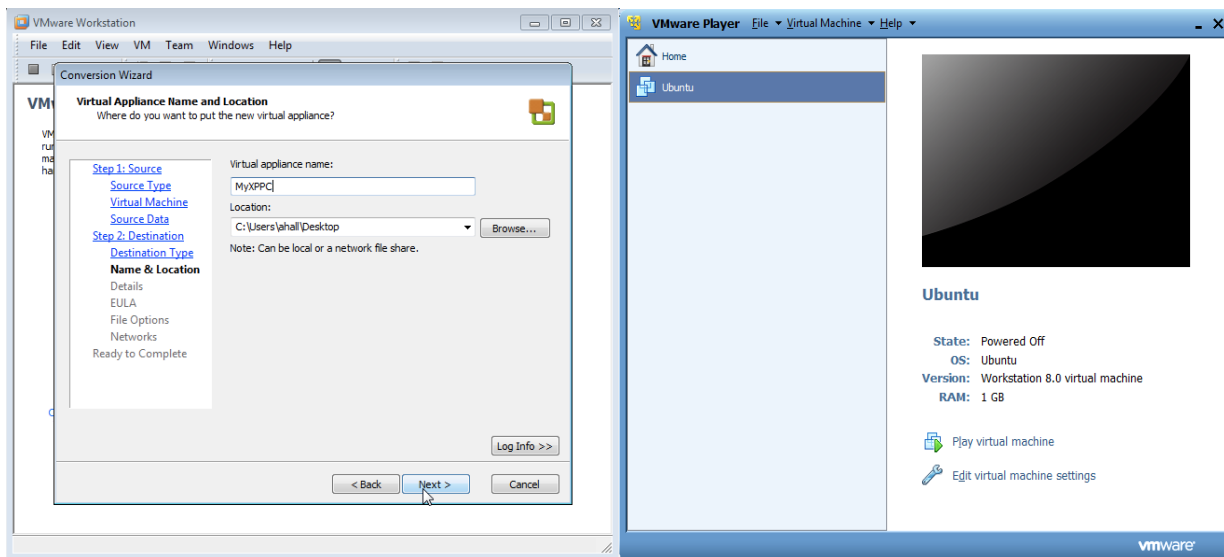
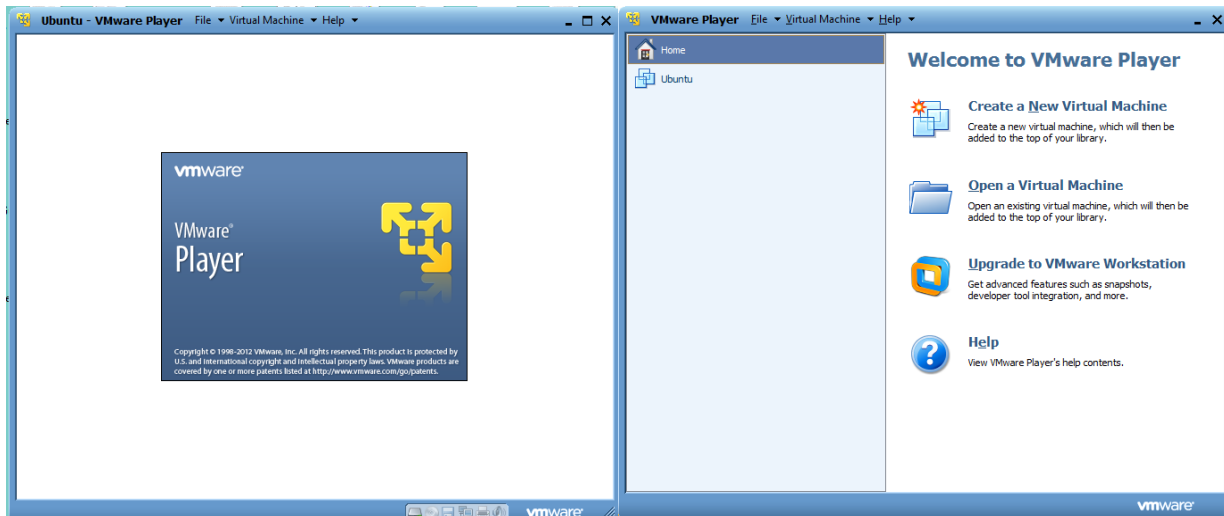
Download and install the VMware Player application program from the VMware web set to the machine on which you will work. The VMware Player application can be downloaded from here:–

Download installation file form

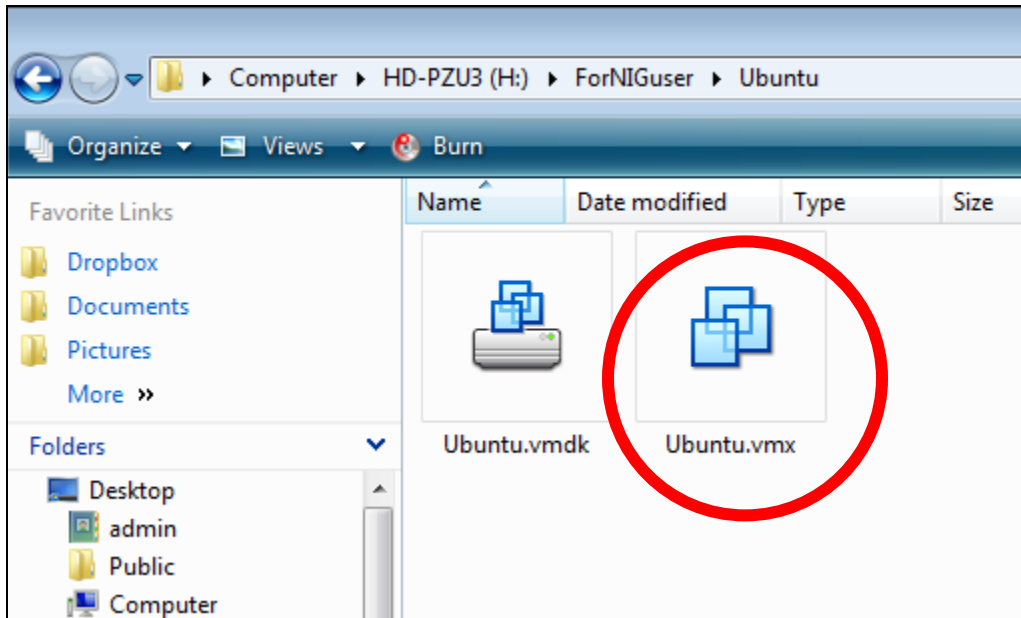
https://my.vmware.com/web/vmware/free#desktop_end_user_computing/vmware_player/5_0

Download install Document

http://www.vmware.com/pdf/view45_installation_guide.pdf

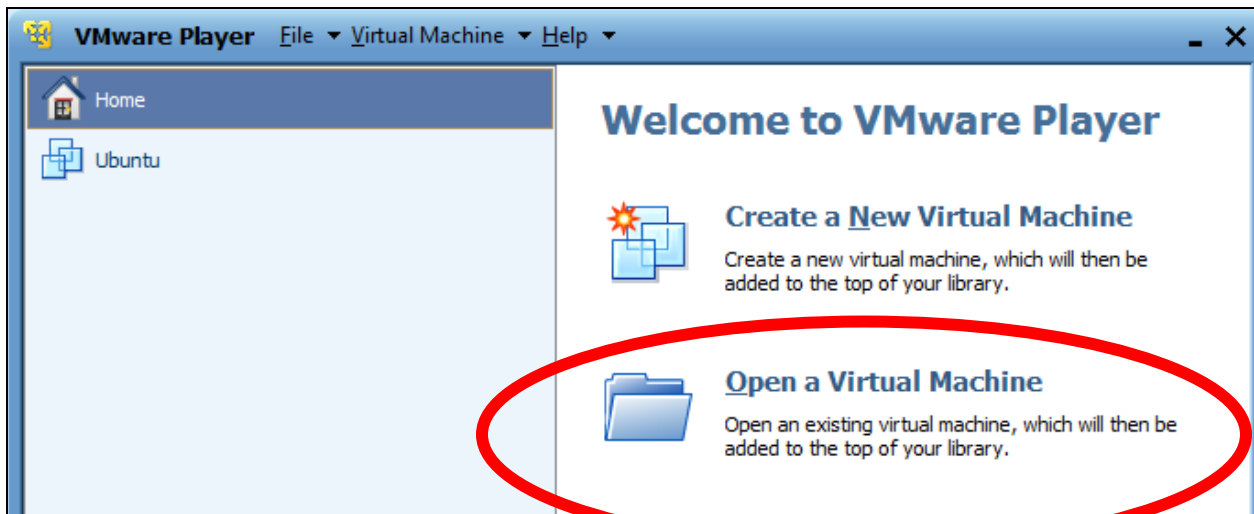


In this document, we provide vm image files for full ubuntu installation with register tool. (17 GB)



User can open .vmx format using VMware player.

Download Ubuntu.vmdk & Ubuntu.vmx from <http://agora.ex.nii.ac.jp/~kitamoto/research/phenotype/>



How to Play a VMDK File

A VMDK file is a virtual hard disk image used natively by VMware products such as the freeware VMware Player. These files are a key component in virtual machines, which are other computer systems emulated within a host operating system. Virtual machines are useful in various situations. For example, if your company wants to test a new software product with multiple operating systems, you can do so using virtual machine software rather than having to use multiple computers or operating systems installed in a dual-boot configuration.

Step 1

Download and install VMware Player. Although other programs can play VMDK files, this is the program that runs them natively. To download the installation file, you will need to sign up for a free account with VMware. Restart your computer when the installation is complete.

Step 2

Open VMware Player and click "Create a New Virtual Machine." If you have a CD, DVD or disk image file containing an operating system, select the appropriate option. Alternatively, you can select "I will install the operating system later," although if you do this, your virtual machine will have very limited functionality because no operating system is installed. Click "Next" when ready to continue.

Step 3

Select the operating system you want to use with the virtual machine. Choose the version from the drop-down box and click "Next" again.

Step 4

Enter a name for the virtual machine and specify a location where you want to store the required files, including VMDK disk images. Click "Next," and then click "Next again on the following page. Click "Finish."

Step 5

Click "Play virtual machine" to start up your virtual computer.

Step 6

Click the "Virtual Machine" menu followed by "Virtual Machine Settings."

Step 7

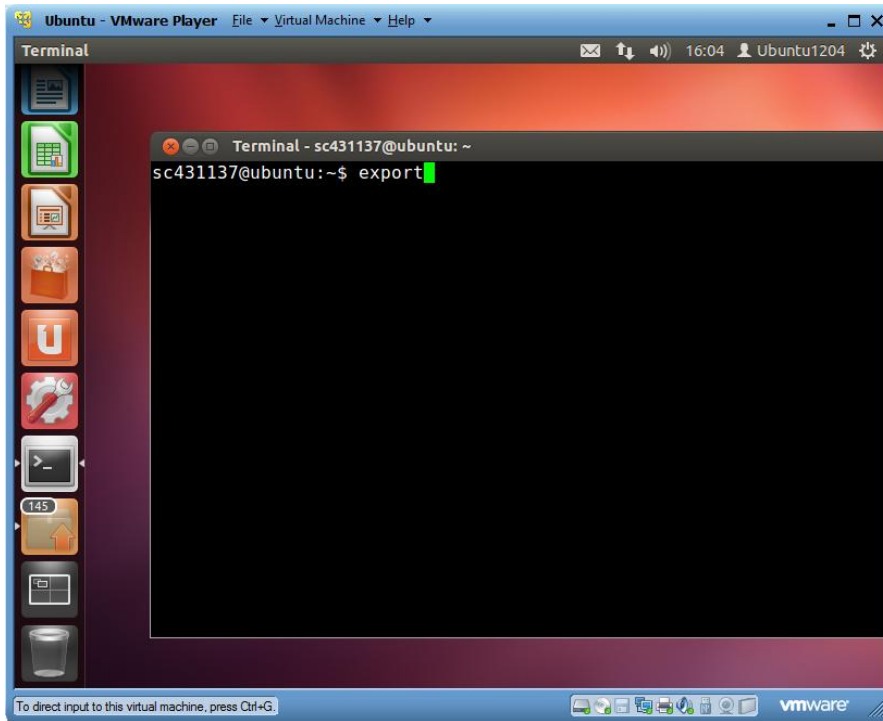
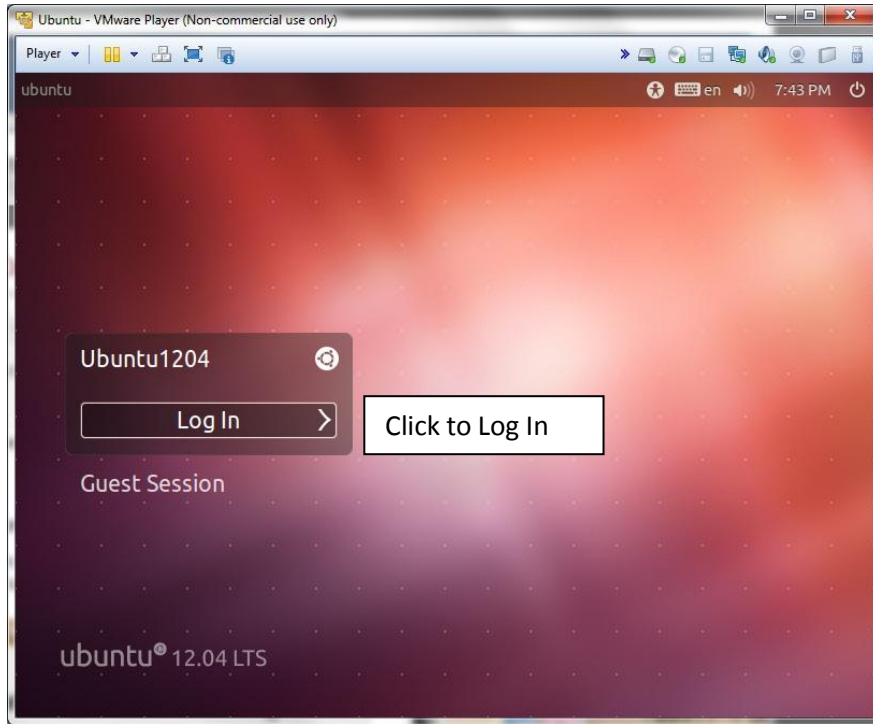
Click the "Add" button, select "Hard Disk" and click "Next." Choose "Use an existing virtual disk" and click "Next." Click "Browse" and browse to the location containing the VMDK file. Click "Open" and then click "Finish."

Step 8

Click "OK" and the VMDK file will be added to your virtual machine. You may need to restart the virtual machine before you can access it.

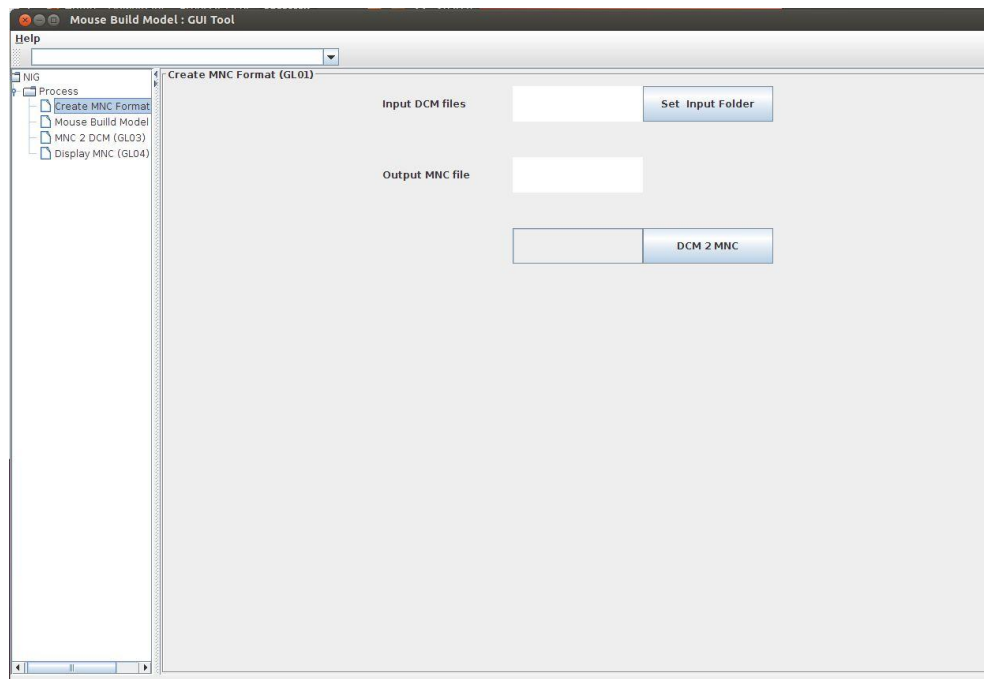
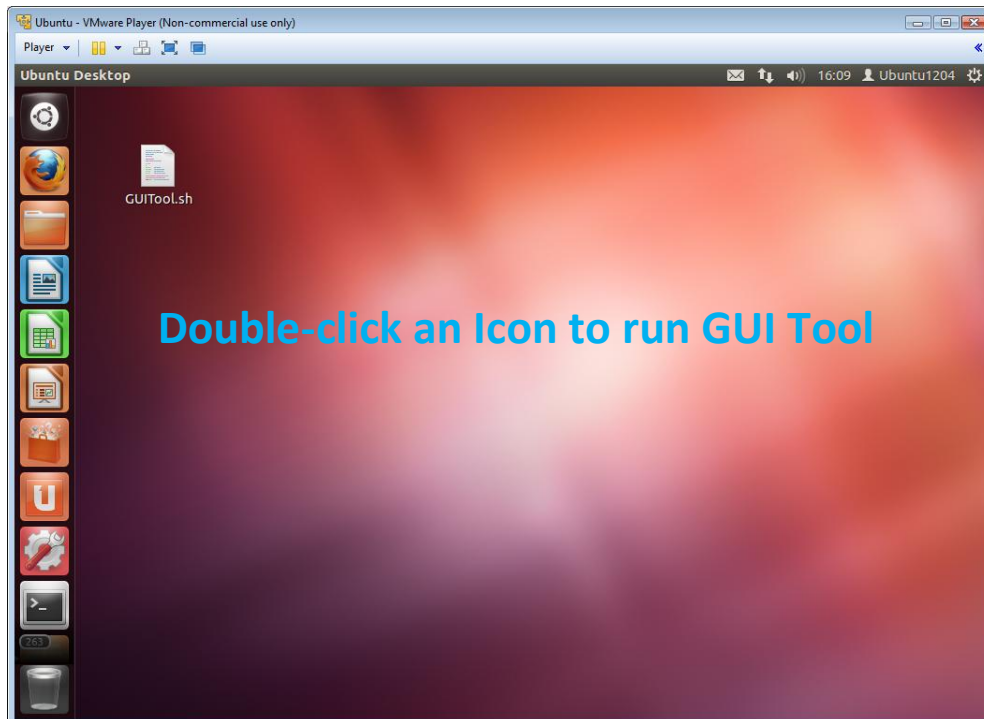
Reference

<http://smallbusiness.chron.com/play-vmrk-file-44318.html>



The system is ready to use.

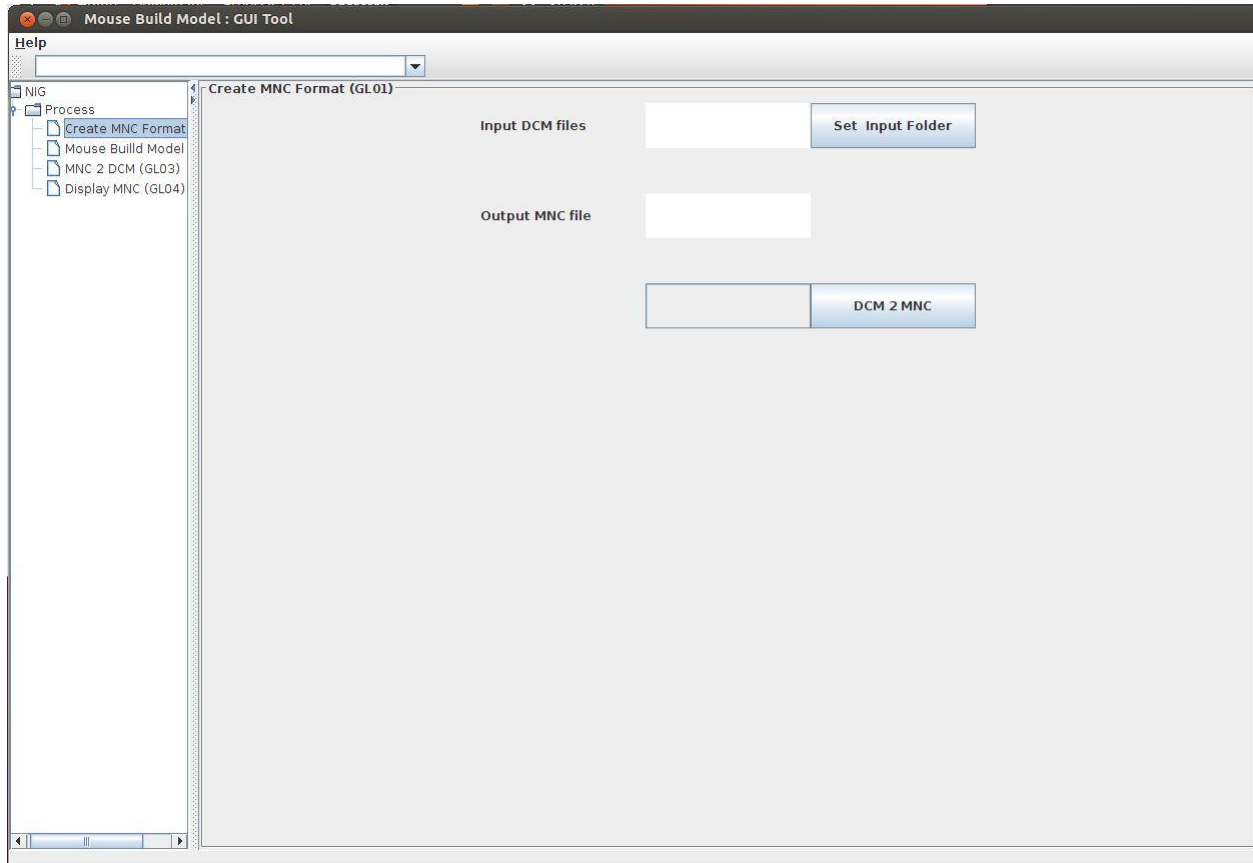
How to run GUI Tool



The GUI Tool is ready to use.

1) convert dcm2mnc

The dcm2mnc command is used to convert DICOM format files to MINC format.



Dataset for Test

http://www.mouseimaging.ca/technologies/mouse_embryo_atlas.html

Input DCM files **1** **Set Input Folder**

Output MNC file

DCM 2 MNC

Open

Look In:

<input type="checkbox"/> XY0000.dcm	<input type="checkbox"/> XY0006.dcm	<input type="checkbox"/> XY0012.dcm	<input type="checkbox"/> XY0018.dcm	<input type="checkbox"/> XY0024.dcm
<input type="checkbox"/> XY0001.dcm	<input type="checkbox"/> XY0007.dcm	<input type="checkbox"/> XY0013.dcm	<input type="checkbox"/> XY0019.dcm	<input type="checkbox"/> XY0025.dcm
<input type="checkbox"/> XY0002.dcm	<input checked="" type="checkbox"/> XY0008.dcm	<input type="checkbox"/> XY0014.dcm	<input type="checkbox"/> XY0020.dcm	<input type="checkbox"/> XY0026.dcm
<input type="checkbox"/> XY0003.dcm	<input type="checkbox"/> XY0009.dcm	<input type="checkbox"/> XY0015.dcm	<input type="checkbox"/> XY0021.dcm	<input type="checkbox"/> XY0027.dcm
<input type="checkbox"/> XY0004.dcm	<input type="checkbox"/> XY0010.dcm	<input type="checkbox"/> XY0016.dcm	<input type="checkbox"/> XY0022.dcm	<input type="checkbox"/> XY0028.dcm
<input type="checkbox"/> XY0005.dcm	<input type="checkbox"/> XY0011.dcm	<input type="checkbox"/> XY0017.dcm	<input type="checkbox"/> XY0023.dcm	<input type="checkbox"/> XY0029.dcm

File Name:

Files of Type:

2 **Open** **Cancel**

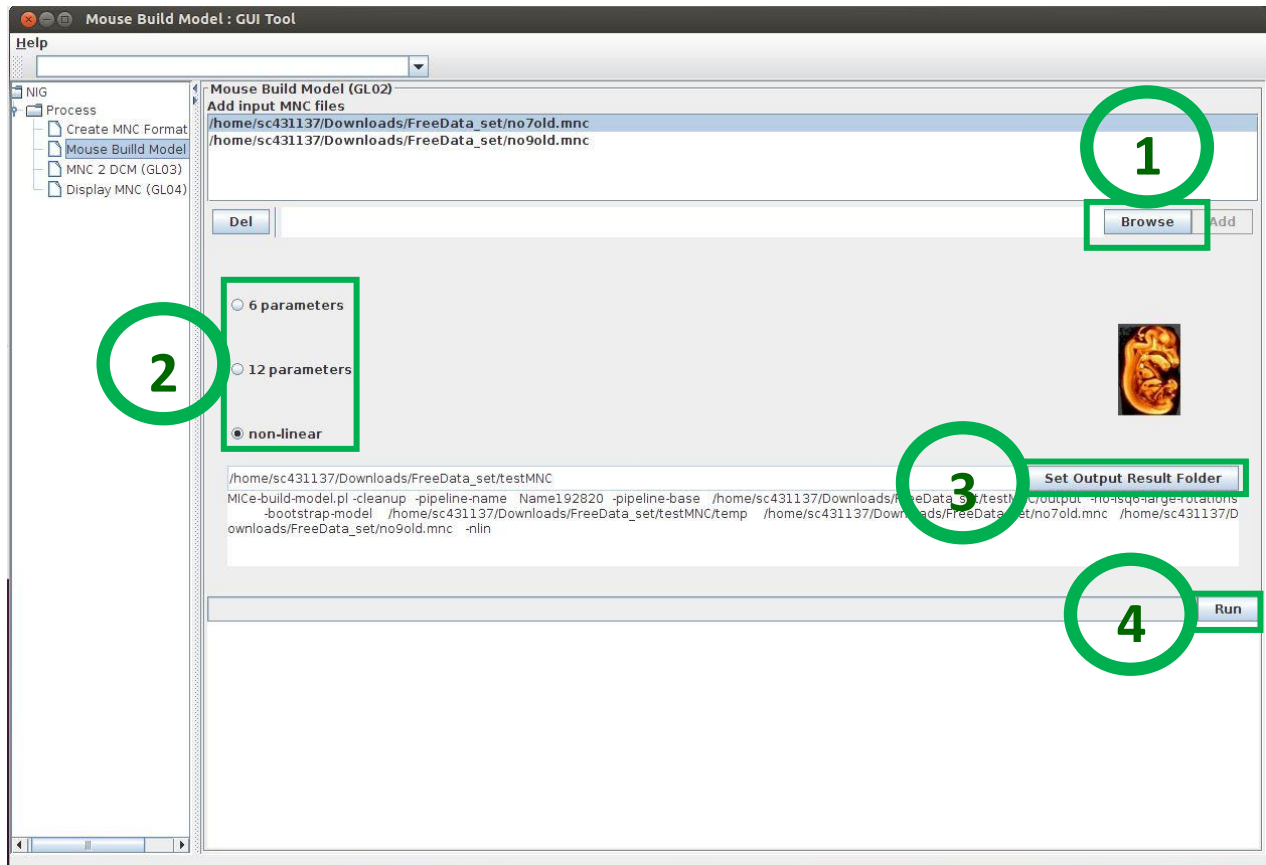
Input DCM files **Set Input Folder**

Output MNC file

Finished **3** **DCM 2 MNC**

2) MICE-build-model (Registration)

MICE-build-model.pl is a software package optimized to perform image registration on mouse images.



3. Display Tool

Display is a hugely visualization program. Its main purposes are segmenting, visualizing/overlying several MINC files and visualization of 3D objects.

