

IIIF Curation Platform: User-Driven Image Sharing with Machine Learning-Based Image Annotation



Asanobu KITAMOTO

Director, Center for Open Data in the Humanities (CODH) and

National Institute of Informatics

<http://codh.rois.ac.jp/>

@rois_codh

Co-authors:

Jun Homma (Flx Style)

Tarek Saier (NII Internship Student, Albert Ludwigs University of Freiburg)



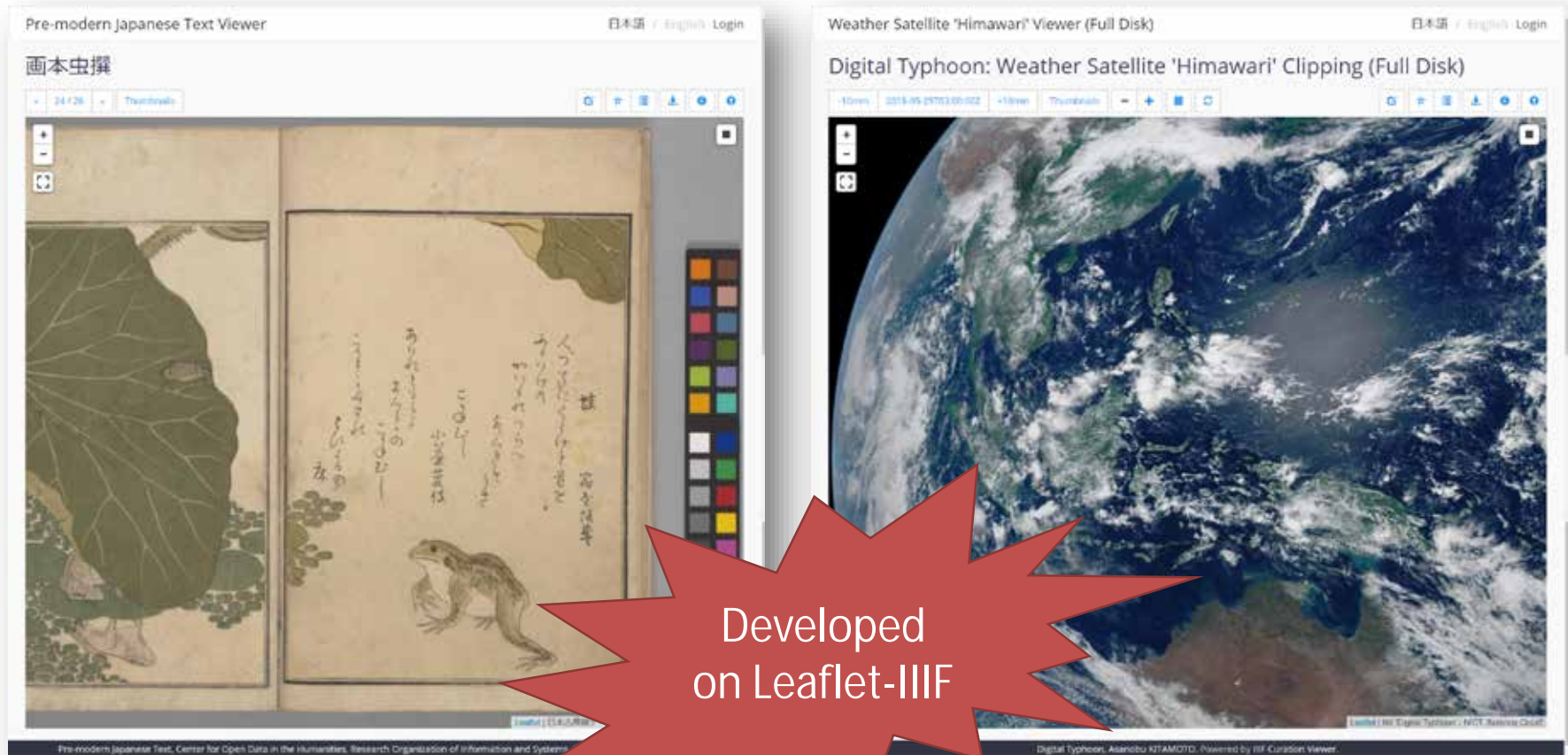
Important Messages

1. IIF Curation Platform is developed by ROIS-DS Center for Open Data in the Humanities (Japan).
2. Treat “IIF content as machine-actionable data,” not “IIF content just for human viewing.”
3. “User-driven” IIF content adds creativity and diversity to the “provider-driven” IIF world.
4. Gateway to external services enriches possible actions on IIF content, including machine learning.

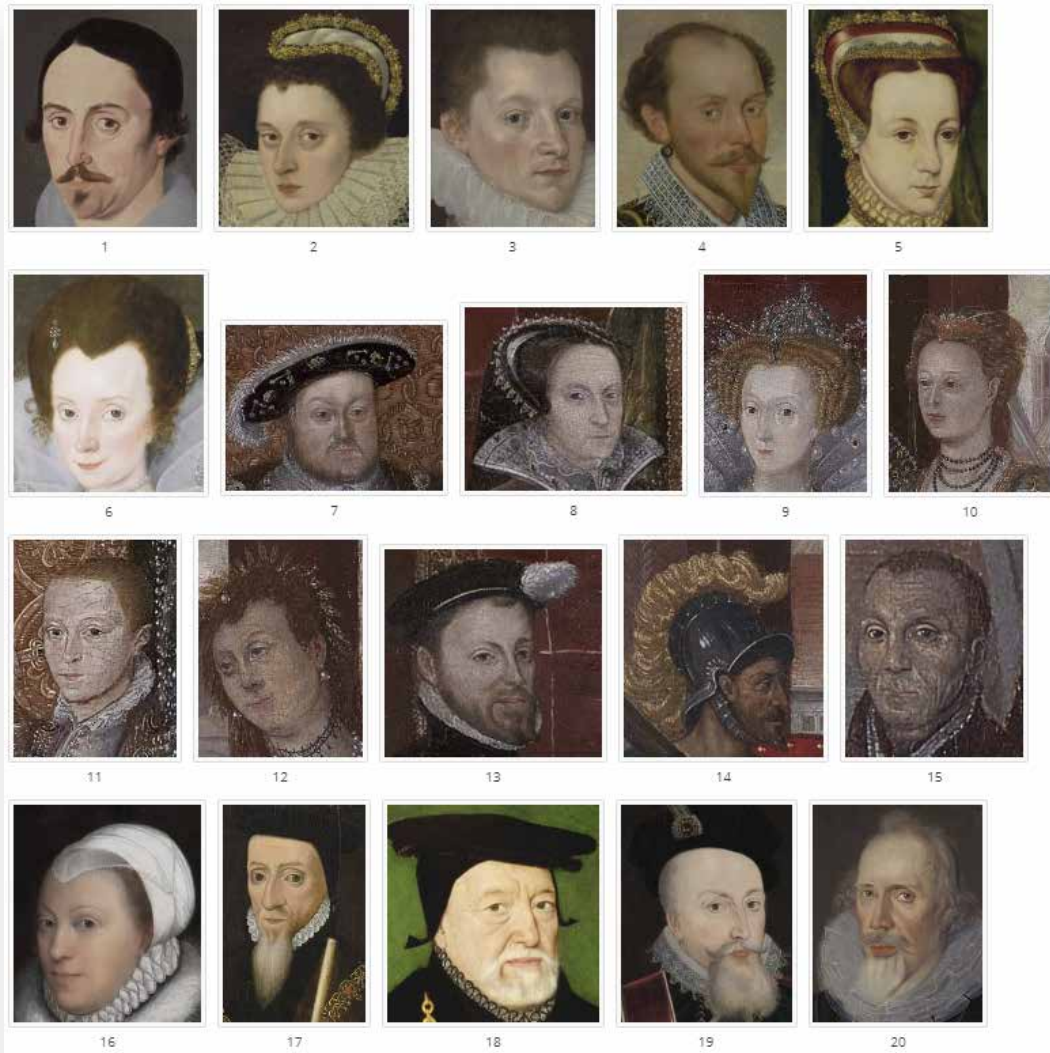


IIIF Curation Viewer (for Timeline)

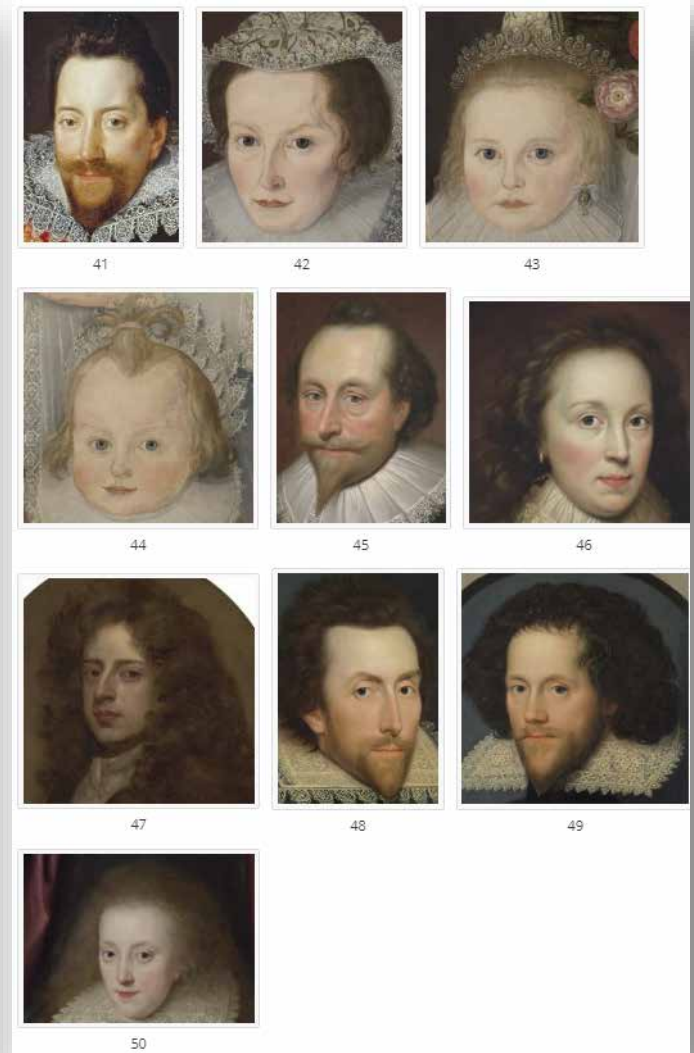
<http://codh.rois.ac.jp/software/iiif-curation-viewer/>



Sixteenth Century



Seventeenth Century



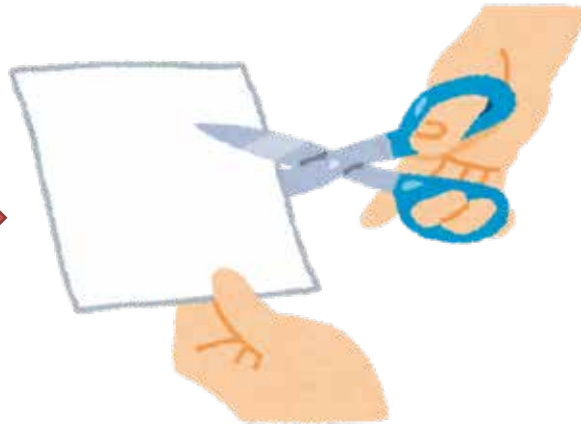
Facial expression data: Portrait <http://codh.rois.ac.jp/curation/exhibition/2/index.html.en>

Credit: Yale Center For British Art

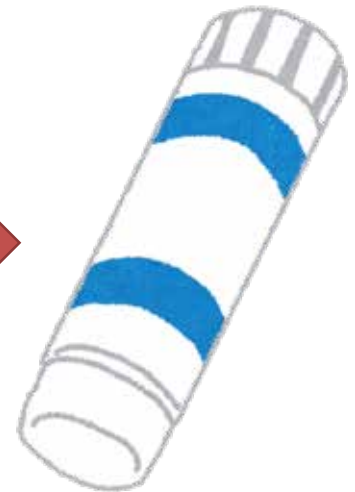
Good Old Analogue World



1 Scissors



2 Paste

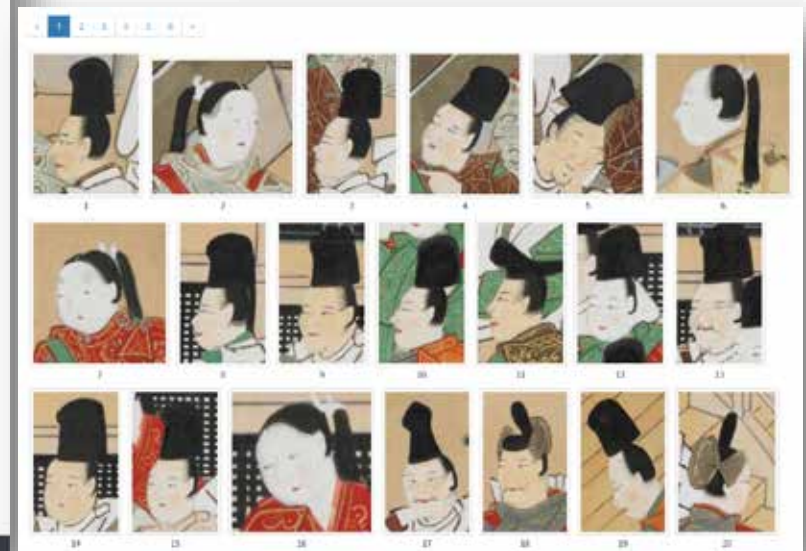


Source: いらすとや, <http://www.irasutoya.com/>

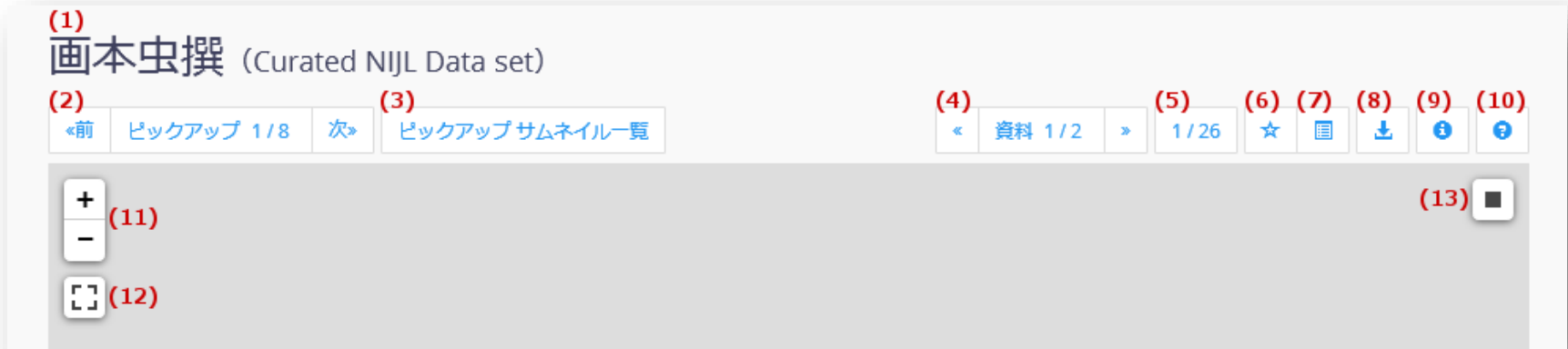
Frictionless Digital World



1. Draw a rectangle.
2. Add to favorites.



Crop and Curate Pattern



1. ' ' (13) is a "crop" button. You can draw a rectangle to specify a part of image.
2. ' ' (6) is a "favorite" button. You can collect any images.
3. These buttons are the minimum requirement to create a new curation.

Curathon!

<http://codh.rois.ac.jp/tutorial/dhsi-2019/>



At Digital Humanities Summer Institute 2019 (June 3-7 at Victoria, Canada), 11 participants, including scholars in Asian studies and subject librarians, are asked to create curations **within two days as homework.**

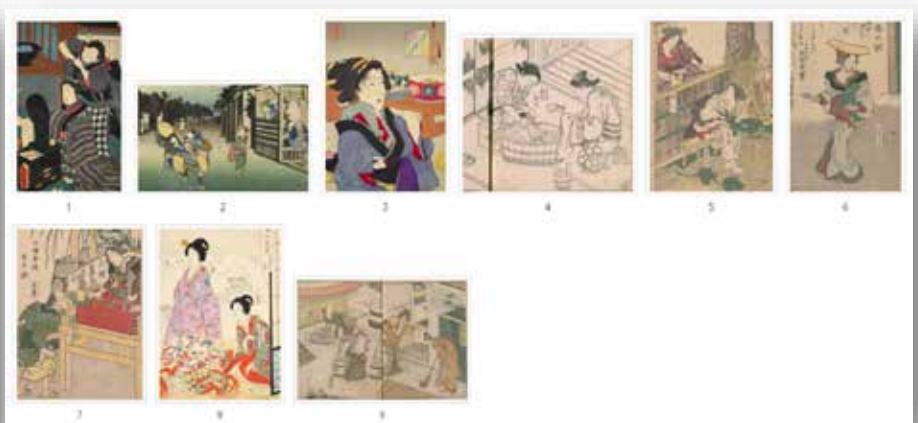
- “Curathon” is an event, like an “ideathon,” to enjoy creativity in an open environment.
- Participants are asked to create their own curations based on their motivation and interests.
- Present the result in front of other people.



Part-of-image research data



Storytelling



Theme-based collection



Asking a new question



Personal narrative



User-Driven Interpretation

- Participants showed a different viewpoint on the interpretation of the content.
- Some participants found something new or started to ask a new research question.
- Explicit data structuring practice clarifies the interpretation of the content.
- Sharing user-driven interpretation enriches the world of IIF.



Providers vs. Users

Provider-Driven

- Memory institutions provide IIIF content.
- Users access IIIF content in the original structure of the content.
- Users cannot add new information to the original IIIF content.

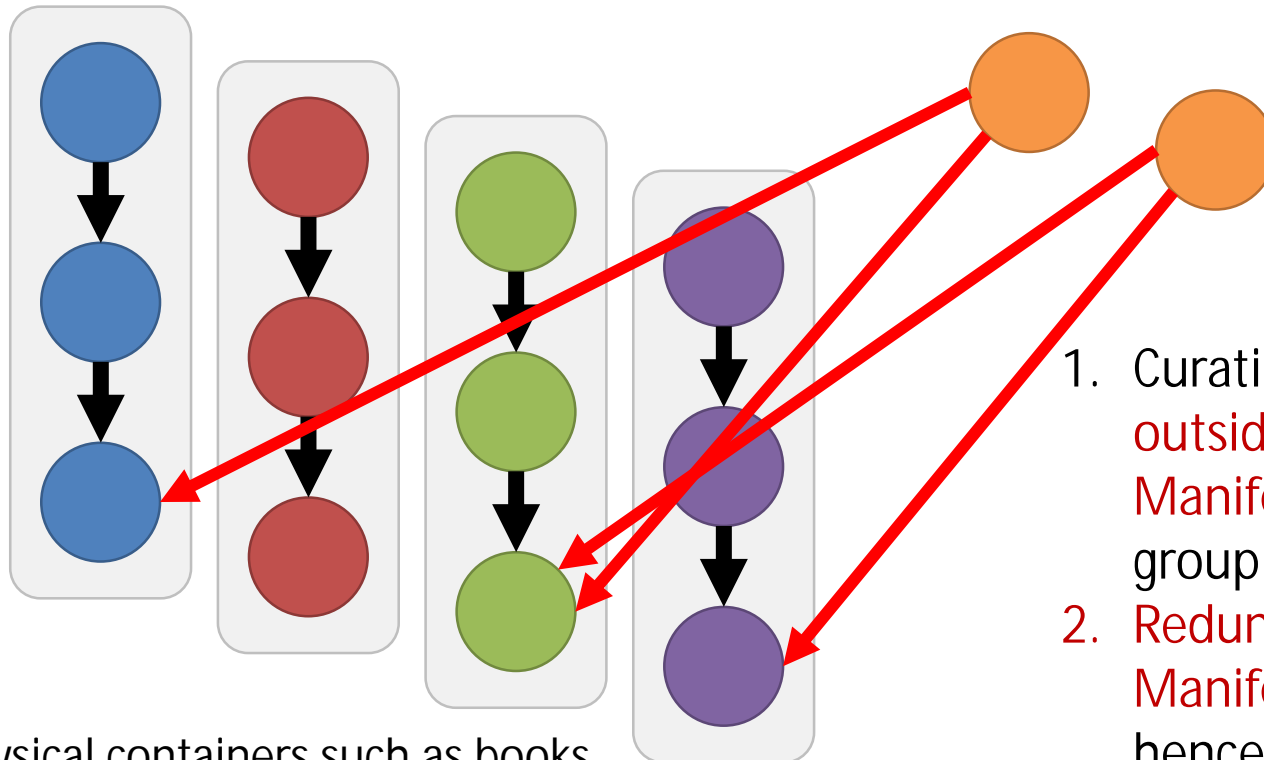
User-Driven

- Create derivative content from the original content.
- Derivative content is itself self-contained.
- Curation is about user-generated content in the world of IIIF.

Manifest and Curation

Manifest from providers

Curation by users

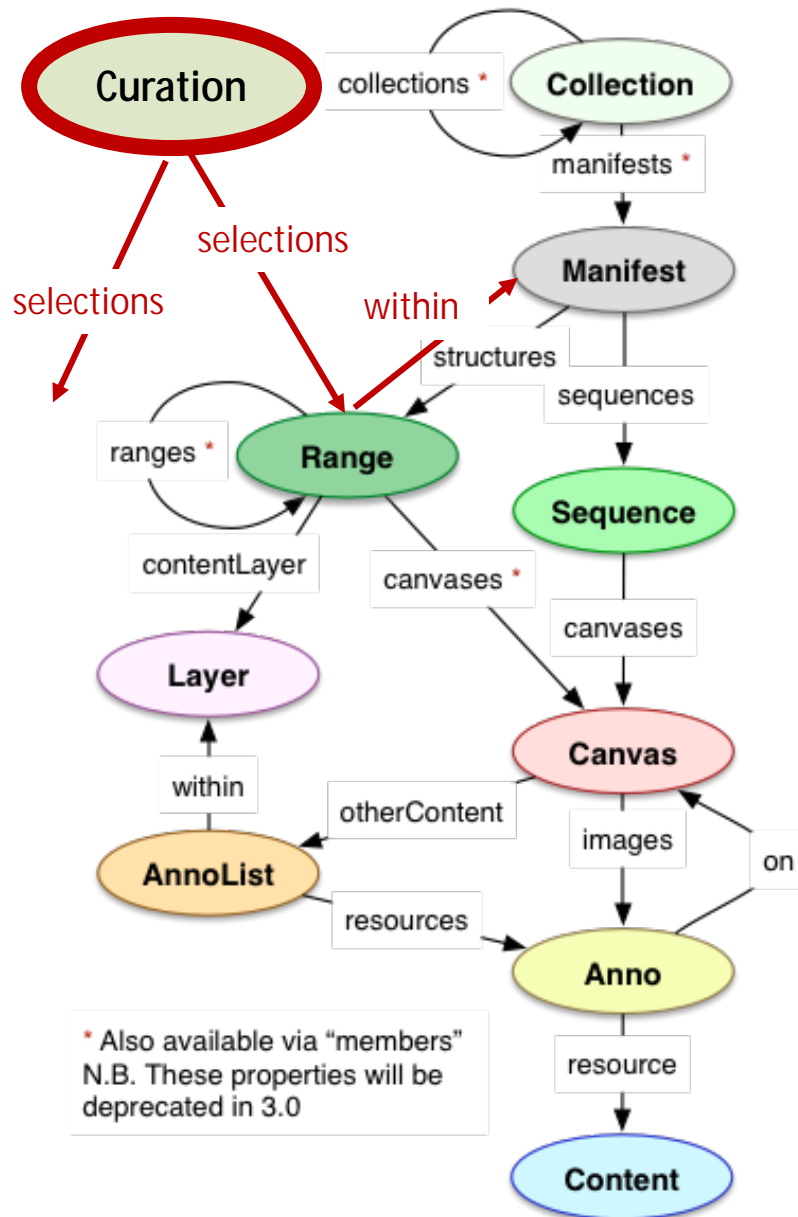


Physical containers such as books.

1. Curation node is located **outside of the structure of Manifest** for the flexible grouping of canvases.
2. **Redundant copying of the Manifest is not required**, hence robust to changes.



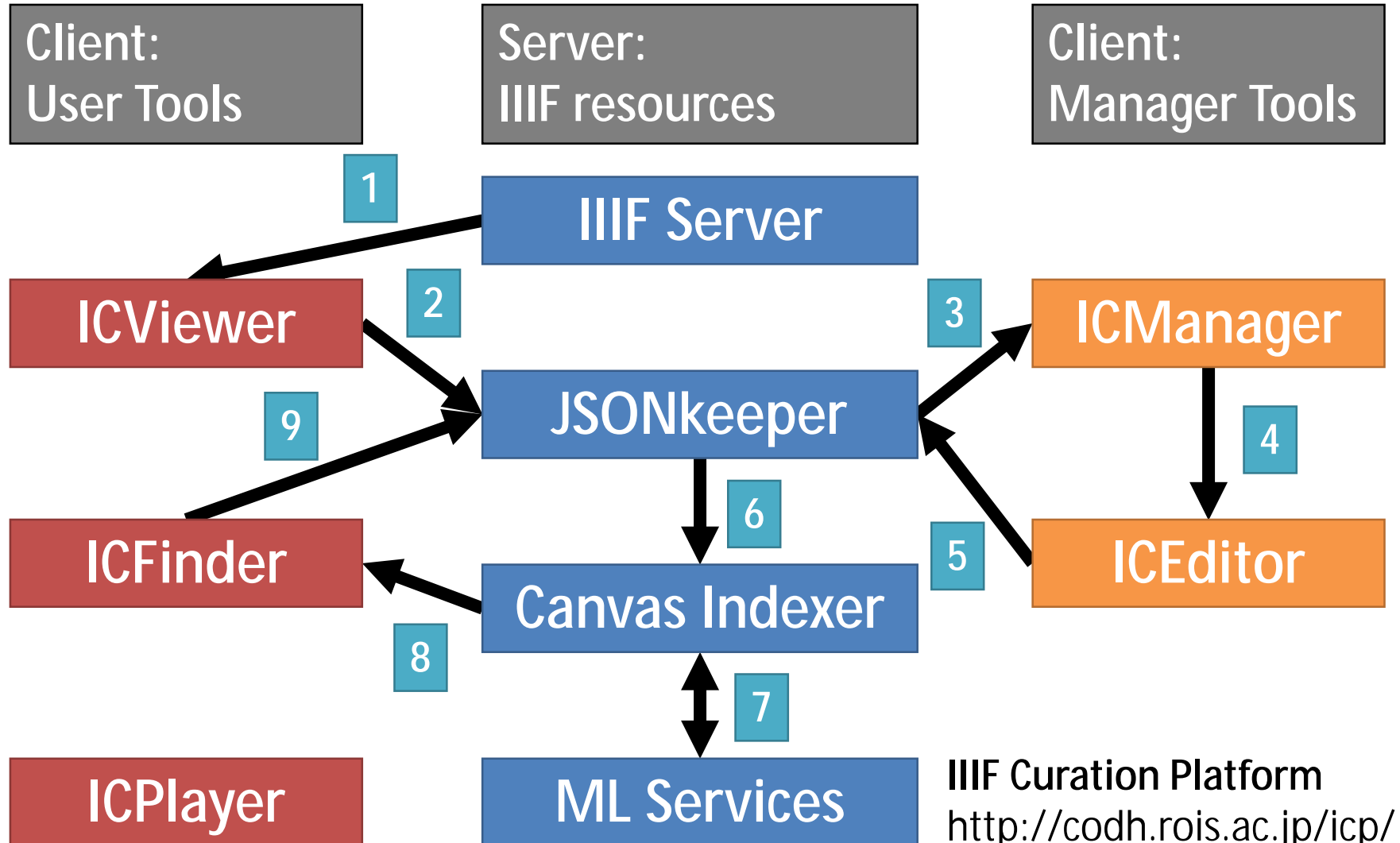
Extension to Presentation API 2



- **Curation** is another upper element of Range.
- **Range** points to **Manifest** using "within" property.
- Curation is an array of ranges across multiple manifests.



IIIF Curation Platform



IIIF Curation Platform
<http://codh.rois.ac.jp/icp/>

Collection of Facial Expressions

<http://codh.rois.ac.jp/face/>

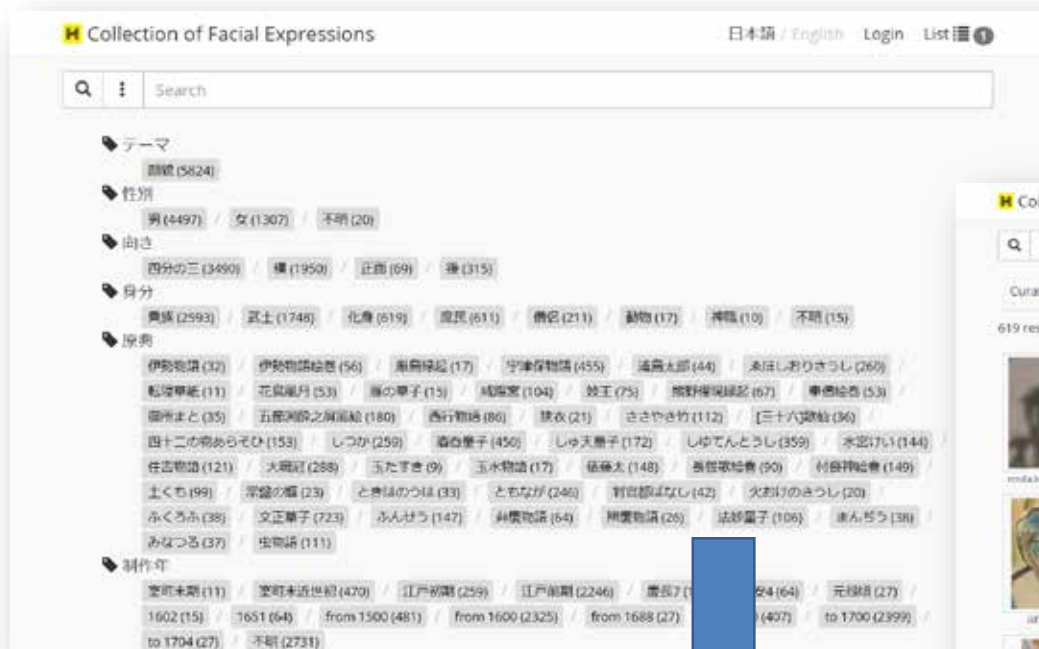
Tag: 「牛若丸」 (https://en.wikipedia.org/wiki/Minamoto_no_Yoshitsune)



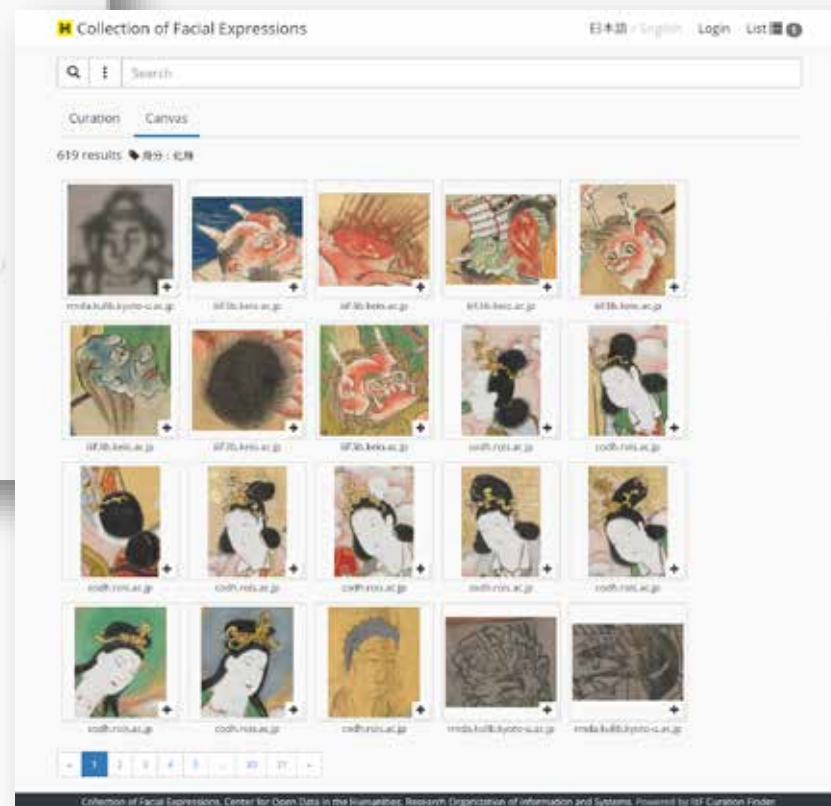
Curation of the same person appearing in different Japanese Emaki handscroll across IIF services.

Facet Search by Human Metadata

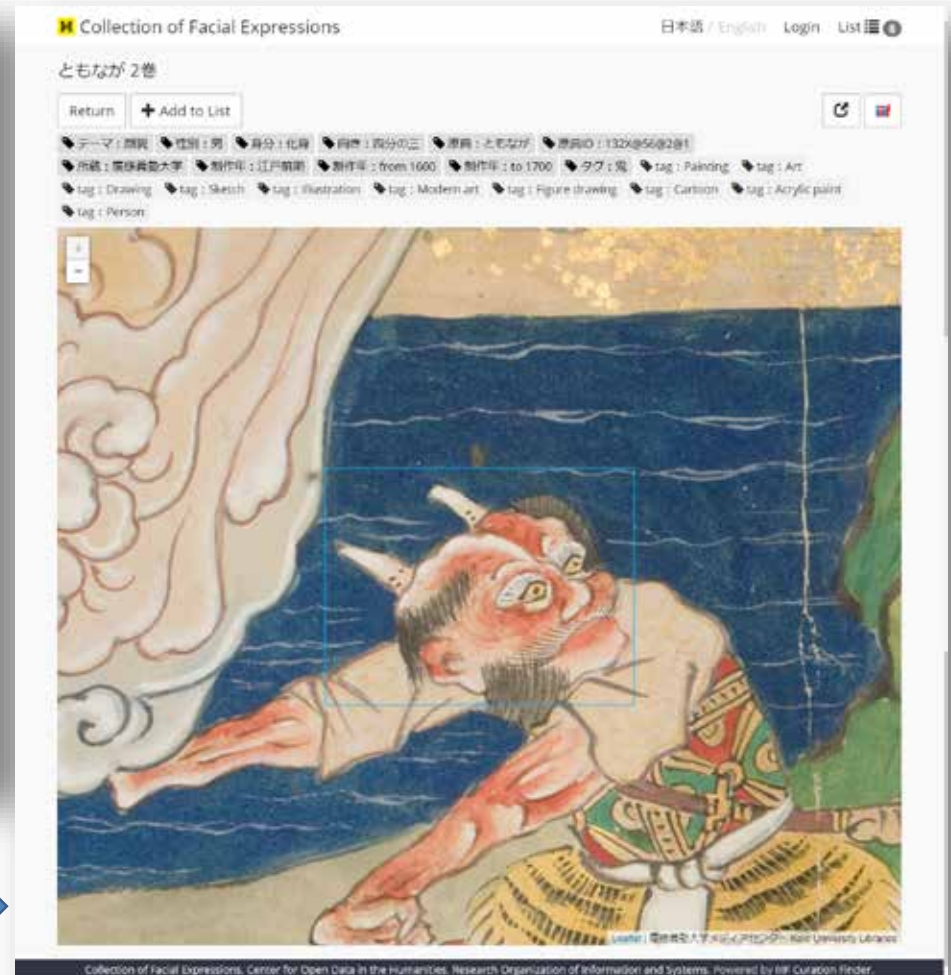
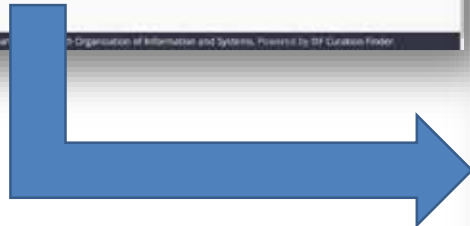
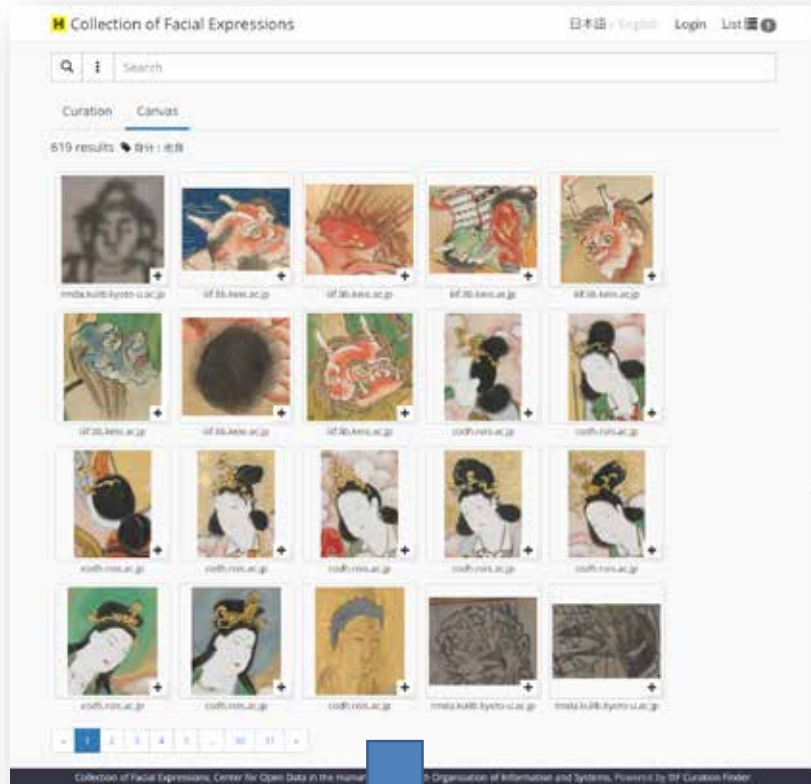
<http://codh.rois.ac.jp/software/iiif-curation-viewer/>



Click the tag, and get the list of a part of canvases annotated by the tag.

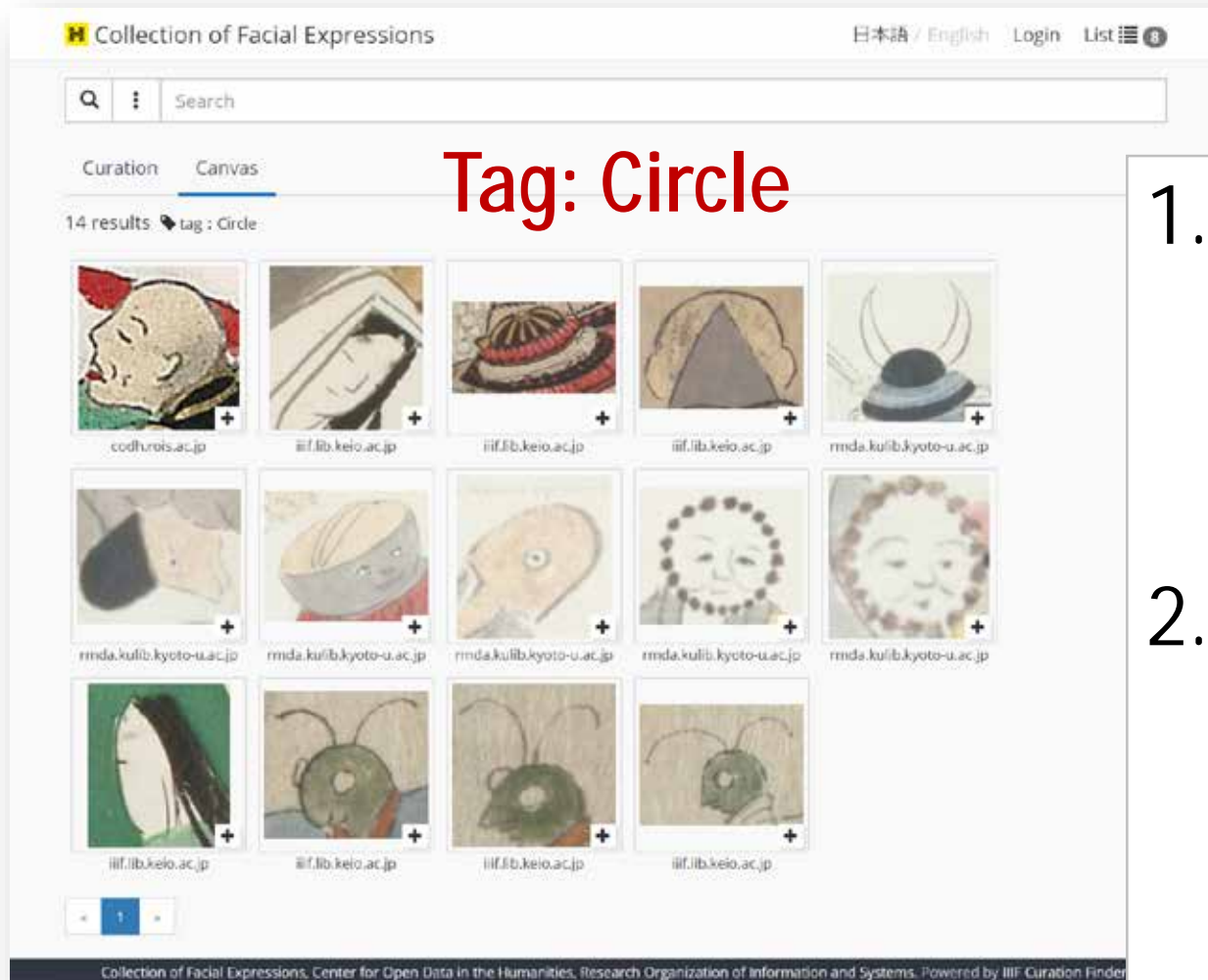


Fine-to-coarse or from Content to Context





Annotation by Machine Learning



1. Correct or not correct, that is not the question.
2. Serendipity: unexpected encounter with images.

North China Railway Archive

<http://codh.rois.ac.jp/north-china-railway/>

華北交通
アーカイブ
NORTH CHINA RAILWAY ARCHIVE

写真検索

詳細検索 華北交通 公開目的 AI・技術 活動

よみがえる膨大な白黒写真 - 国策鉄道会社が遺した戦時期広報用写真の研究データベース

公開目的・公開宗旨: [日本語](#) | [簡体中文](#) | [繁体中文](#) |

華北交通アーカイブは、日中戦争期に中国北部・西北部(華北)の交通インフラを管轄していた華北交通株式会社(以下、華北交通)が所蔵していた3万8千点あまりの広報用ストックフォトをもとに構築された統合型の研究データベースです。ここに含まれる個々の写真は、当時の風物を詳細に調べるための精密(precise)な資料としての価値があります。一方、写真群全体の意味を考えるには、特定の撮影対象がなぜ選ばれたのかという意図を考えることも不可欠であり、そうしたバイアスを踏まえると、この写真群は事実の正確(accurate)な描写とはみせない面もあります。こうした問題を考えるために、戦時期日本人／日本語話者向けに用いられた広報用写真を学術研究資源として公開しました。今後もその全貌について、日中間はもとより、国際的な枠組みのもとで調査していきます。【[もっと詳しく..](#)】【[華北交通 路線図..](#)】



Automatic Tagging

<http://codh.rois.ac.jp/north-china-railway/>





Automatic Colorization

<http://codh.rois.ac.jp/north-china-railway/>

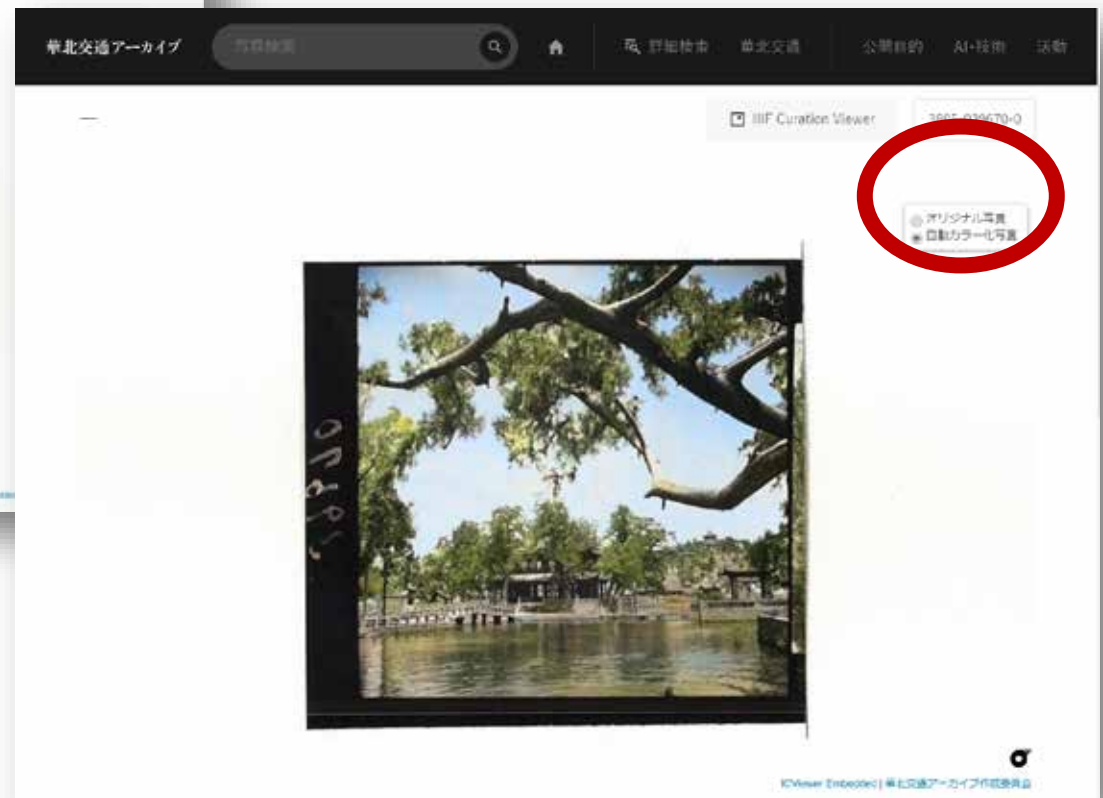


Choice of Images

<http://codh.rois.ac.jp/north-china-railway/>

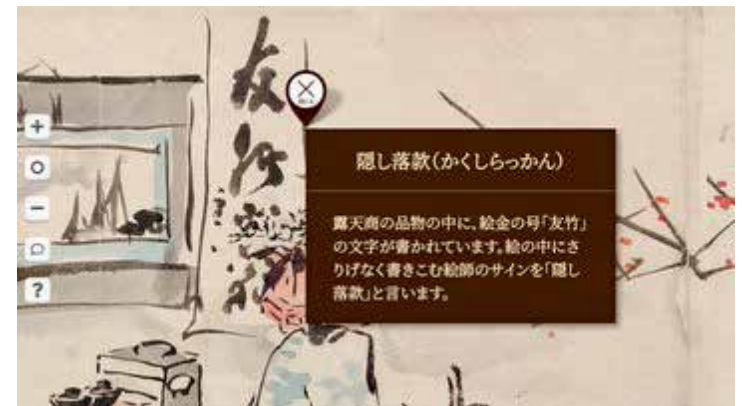


Oa:Choice for switching multiple representations of the same object.



Museum Exhibition

<http://codh.rois.ac.jp/iiif-curation-platform/>



Special exhibition at the museum of art, Kochi. Collaboration with Prof. Akihiko Takano (NII) and Rensou Shuppan.

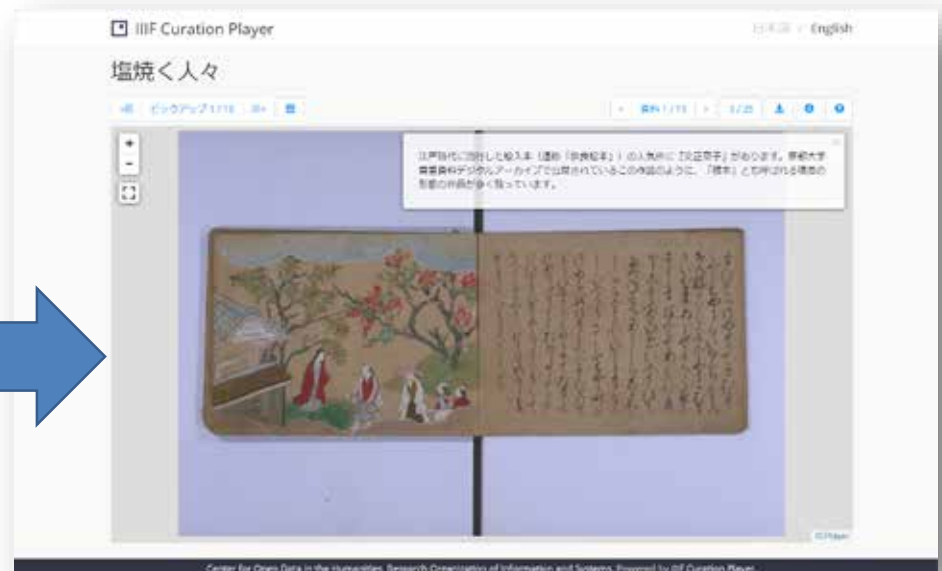
Curation and Offline to Online



Curation for a smartphone-based “museum guide” via the QR code in the museum, and IIIF Curation Player showing (curatorial) descriptions about the work.

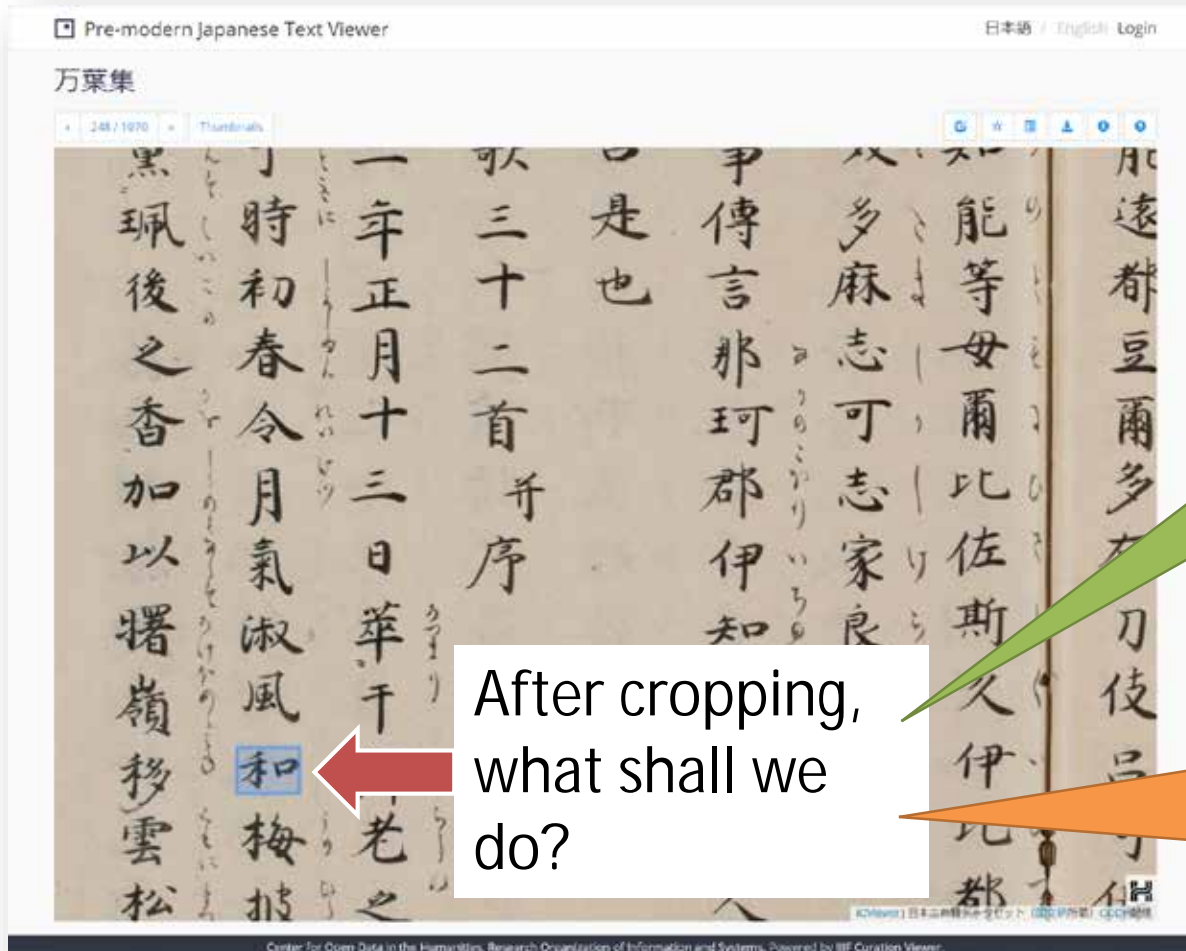


いらすとや





Gateway to External Services



1. Crop and Curate Pattern

2. Crop and Export Pattern

ICP Service Repository

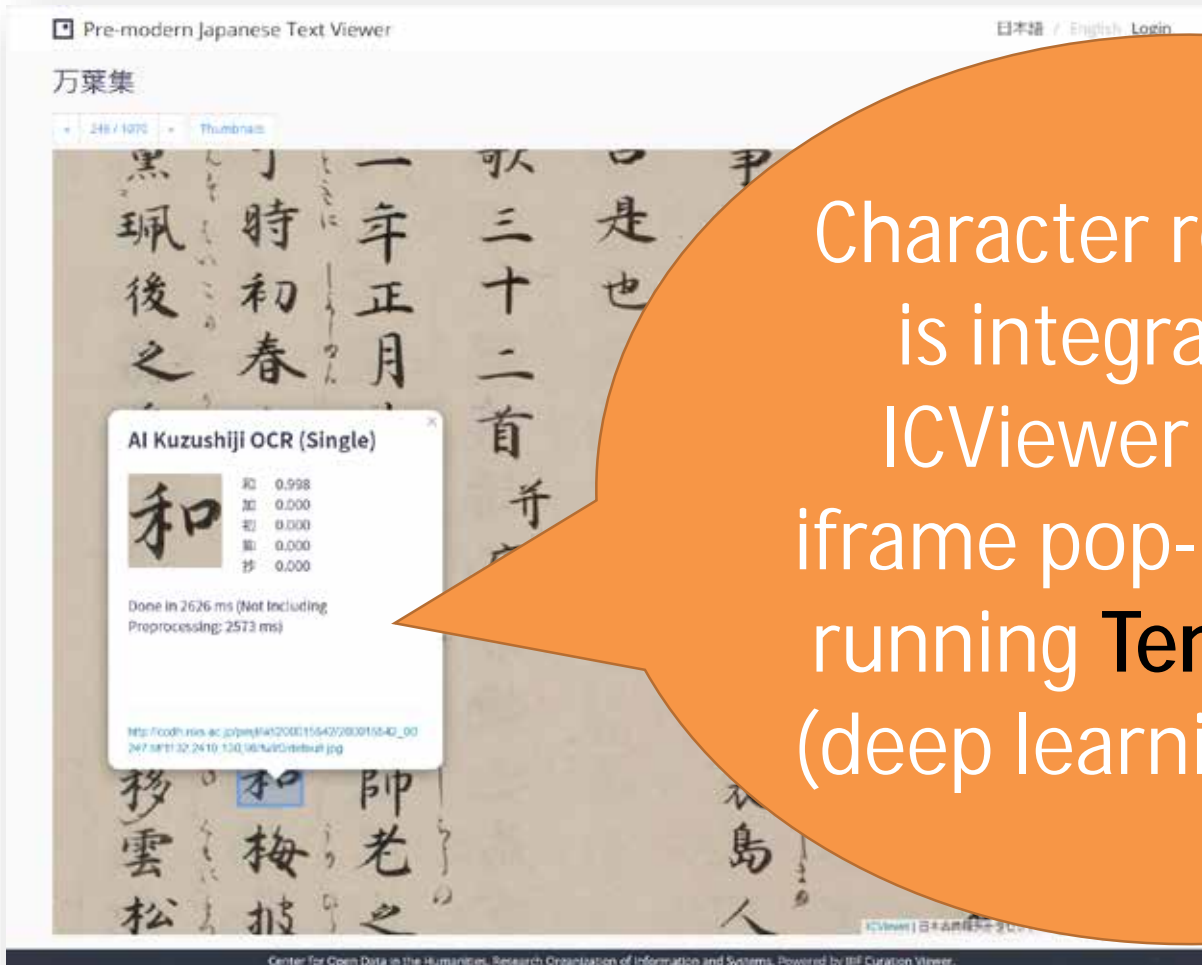
<http://codh.rois.ac.jp/icp/service-repository/>

1. Share the **endpoint setting** (a JSON file).
 2. Select the endpoint to **export the cropped image** to the external service.
-
1. AI Kuzushiji Recognition (Single Character) (ROIS-DS Center for Open Data in the Humanities)
 2. Harimazejo Similar Image Search Prototype (UTokyo Digital Archives Project)
 3. Ukiyo-e Search (John Resig, ukiyo-e.org)
 4. Google Images (Google)



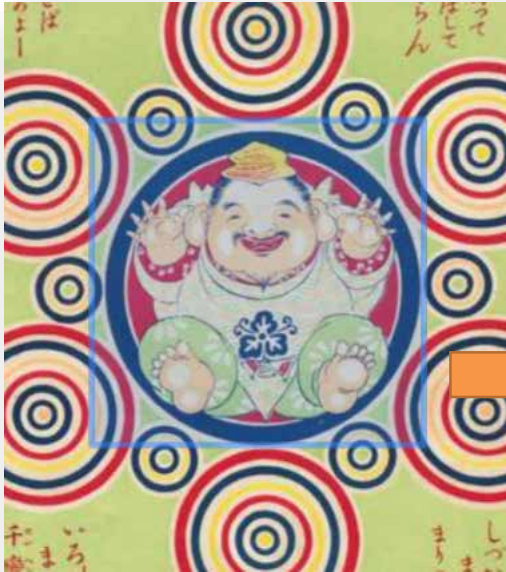
AI Kuzushiji OCR (Single)

<http://codh.rois.ac.jp/char-shape/app/single-mobilenet/>



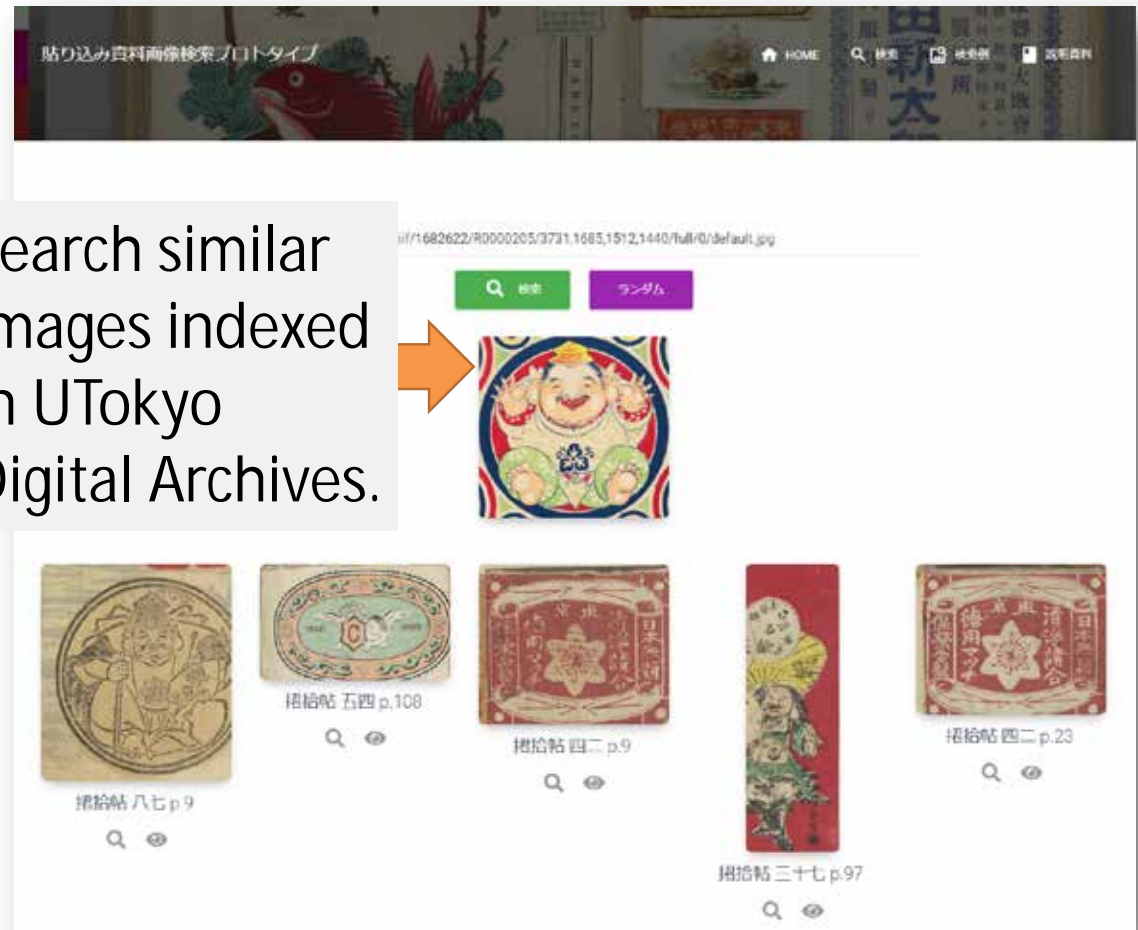
Character recognition
is integrated into
ICViewer using an
iframe pop-up window
running **Tensorflow.js**
(deep learning library).

Harimazejo Similar Image Search Prototype (UTokyo Digital Archives Project)

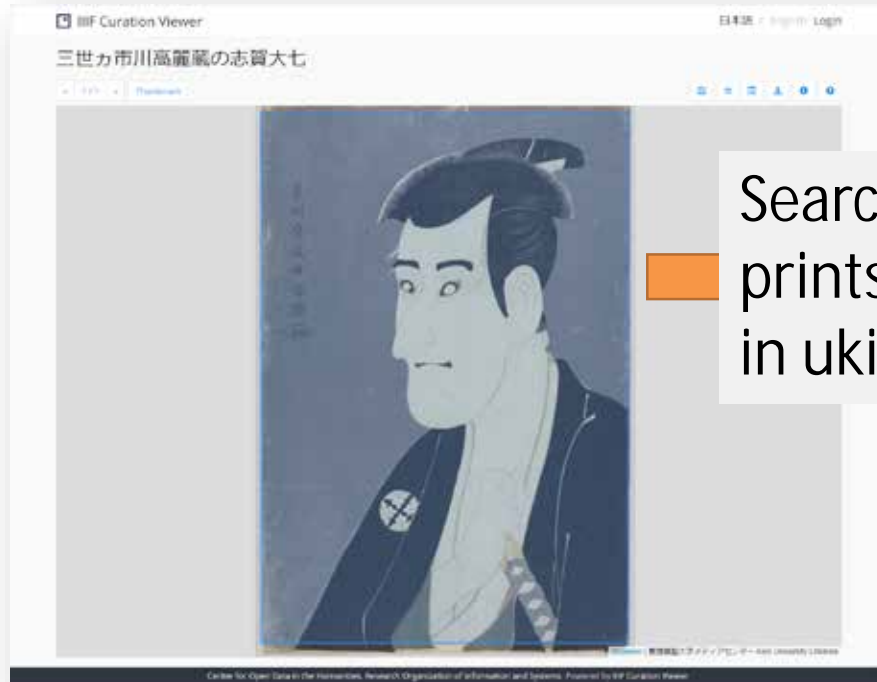


IIIF Image from
National Diet
Library

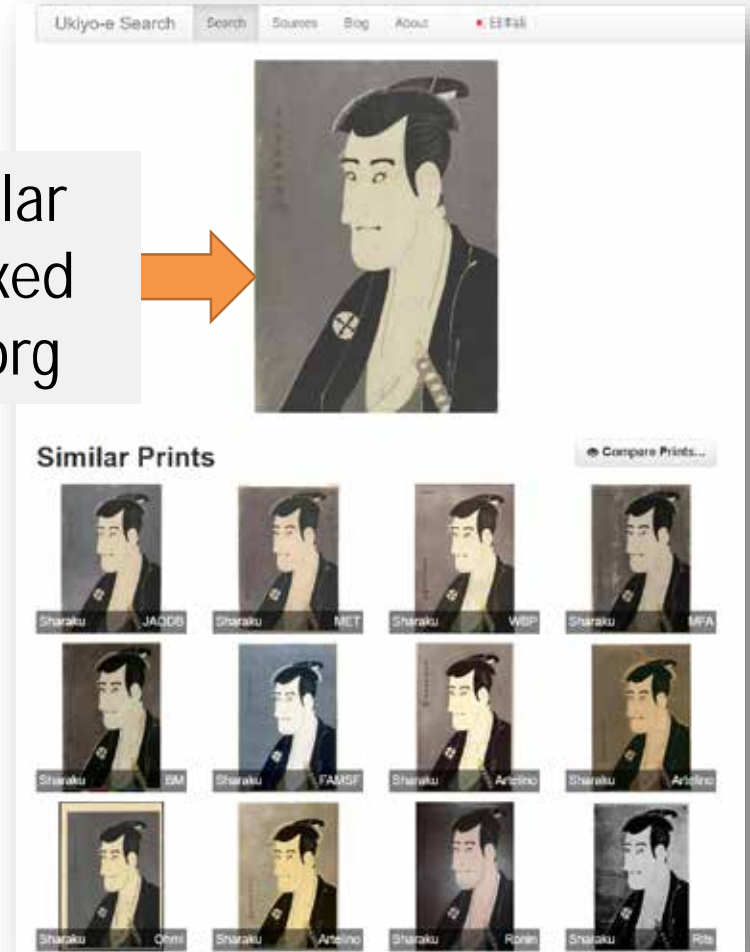
Search similar
images indexed
in UTokyo
Digital Archives.



Ukiyo-e Search (John Resig, ukiyo-e.org)

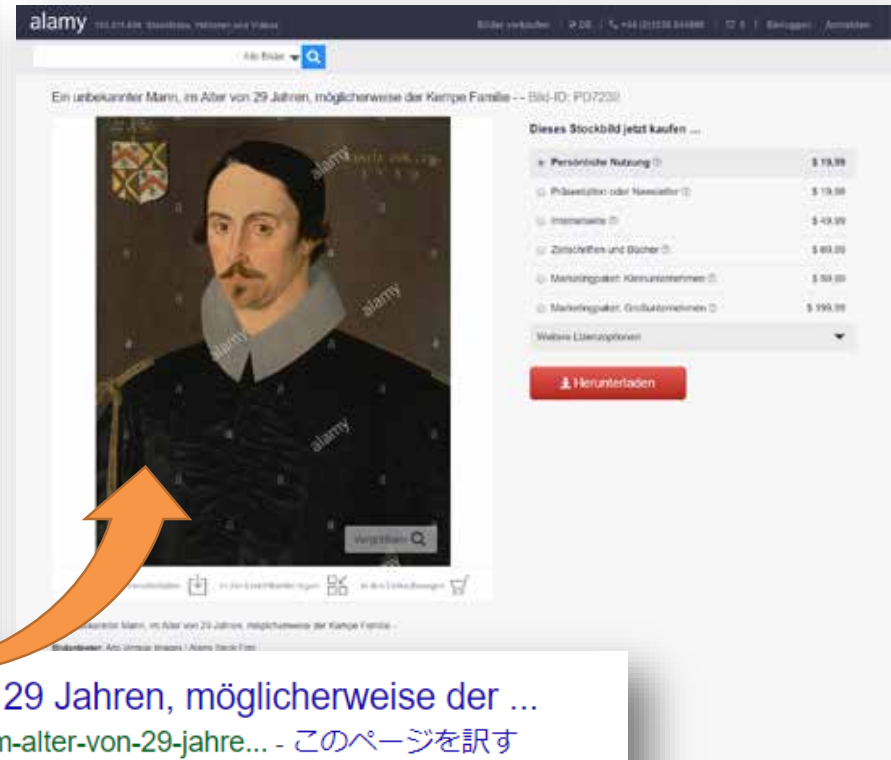
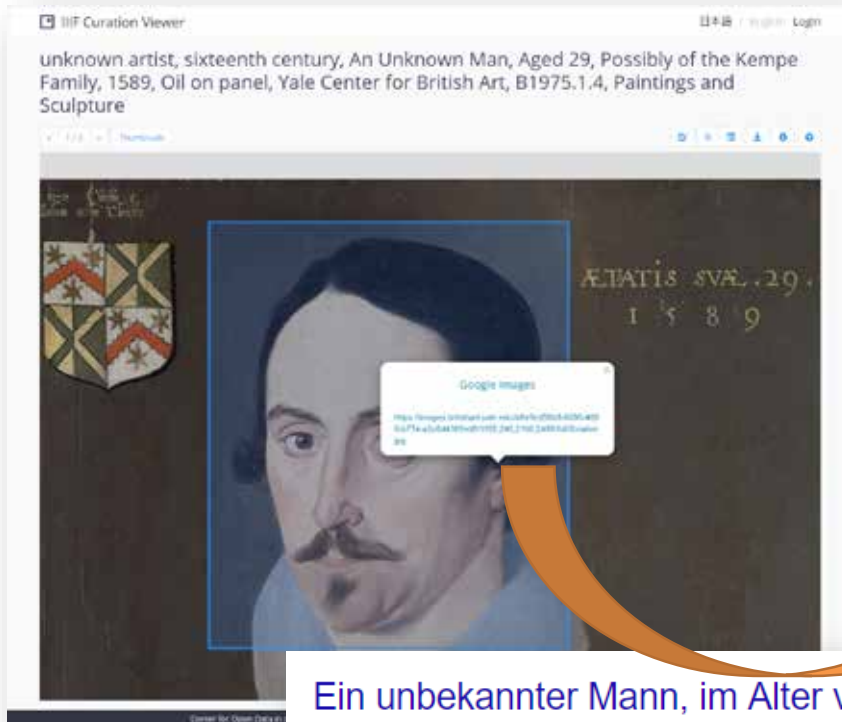


Search similar
prints indexed
in ukiyo-e.org



IIF Image from Keio University

Google Images (Google)



Ein unbekannter Mann, im Alter von 29 Jahren, möglicherweise der ...

<https://www.alamy.de/ein-unbekannter-mann-im-alter-von-29-jahre...> - このページを訳す



300 × 405 - Laden Sie dieses Alamy Stockfoto Ein unbekannter **Mann**, im **Alter** von **29 Jahren**, möglicherweise der Kempe Familie - - PD7230 aus Millionen von hochauflösenden Stockfotos, Illustrationen und Vektorgrafiken herunter.

Data-Driven IIF Viewers

Most IIF
Image
Viewers

- Suitable for human viewing (reading).
- Physical materials and their typical usage are transferred to the digital space.



- Treat content as machine-actionable data.
- Explore the new potential of data-driven research.



ICP Tutorial (Ja / En)

<http://www.ch-suzuki.com/icpt/>

ICP Tutorial Introduction

Home ICP Tutorial About Contact Us

[日本語](#) / [English](#)

ICP Tutorial: Introduction

Table of Contents

- [Introduction](#)
- 01: [What is ICP?](#)
- 02: [IIIF Curation Viewer](#)
- 03: [IIIF Curation Manager and IIIF Curation Editor](#)
- 04: [Running ICP on Docker and IIIF Curation Finder](#)
- 05: [Application Example of ICP \(Currently being prepared\)](#)
- 06: [IIIF Curation Player \(Currently being prepared\)](#)
- Appendix [FAQ](#)

Introduction

[This tutorial is a tentative version. I will update this tutorial according to the latest version.
Because of my English skill, this tutorial may contain some English mistakes and sentences that are difficult to understand. Please give me feedback if you find some problems.]

This tutorial provides basic information about IIIF Curation Platform (ICP). Our step by step tutorials are easy to understand ICP and its using method.

First, we explain the concept and design of ICP. Then we create, manage and edit curation with demo version ICP on CODH



Important Messages

1. IIF Curation Platform is developed by ROIS-DS Center for Open Data in the Humanities (Japan).
2. Treat “IIF content as machine-actionable data,” not “IIF content just for human viewing.”
3. “User-driven” IIF content adds creativity and diversity to the “provider-driven” IIF world.
4. Gateway to external services enriches possible actions on IIF content, including machine learning.



Acknowledgment

IIIF Curation Platform

<http://codh.rois.ac.jp/icp/>

- Mr. Jack Reed for the development of Leaflet-IIIF.
- Mr. Chikahiko Suzuki (CODH) for creating curations and ICP tutorials.
- DHSI 2019 participants for creating their own curations.